



 **SAGITTER**

**BLOK EVO  
SERIES**





The BLOK EVO family represents the evolution of modular professional lighting systems. Designed to offer maximum power, versatility, and creative control, it allows for the creation of customized lighting configurations and dynamic surfaces, adapting to any type of production: live performances, broadcasts, corporate events, and scenic installations.

## THE BLOK EVO FAMILY

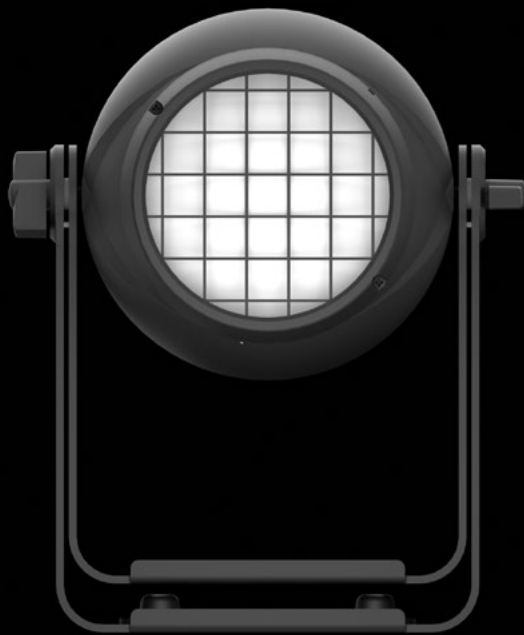
Each model in the BLOK EVO family combines latest-generation RGBAL LED sources, advanced color management, and modularity, offering lighting designers an expressive, robust tool ready for both indoor and outdoor applications.

# BLOK EVO 1 FC

The BLOK EVO 1 FC is the most compact version of the BLOK EVO series, designed to offer professional light quality, extremely precise control, and maximum reliability in a lightweight and versatile form factor.

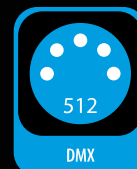
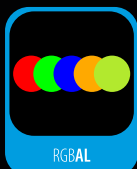
Equipped with a 400W RGBAL COB light source, it guarantees high-quality color rendering, saturated and natural colors, and extremely smooth dimming thanks to halogen curve emulation. The absence of chromatic shadows and the superior quality of white light complete a professional level light output.

Like all products in the family, the BLOK EVO 1 FC can be integrated into modular matrix configurations via a dedicated connection system, making it ideal for creative applications, television sets, live events, and corporate events.



## KEY POINTS

- 1 x 400 W high-efficiency RGBAL COB source
- Professional color quality with rich, natural, and vibrant colors
- Ultra-precise 16-bit dimming with halogen curve emulation
- Red Shift function for an authentic tungsten dim-to-warm effect
- Fast Lock system for tool-free setup and quick installation
- Multiple mounting points for creative rigging and floor installations, ideal for continuous matrix configurations
- Interchangeable magnetic lenses to quickly adapt the beam angle
- Adjustable PWM frequency up to 25 kHz, ideal for video and broadcast applications
- Compact IP65 housing, perfect for indoor and outdoor use
- Lightweight format, ideal for touring and fast installations
- Flightcase for 8 projectors (Order code: SG CASEBLKEVO1FC)



Mounting Points: 2 x 1/4  
turn locks on bracket

Die cast aluminium housing  
IP rating: IP65

SG BLOKEVO1FCCK  
Fast Lock system without  
using tools (*not included*)

On-board mechanics  
for stacking multiple devices

LCD graphic display

2 x M8 threaded holes  
for pendant bracket

True1 compatible Power I/O

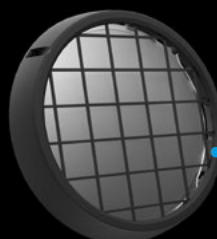
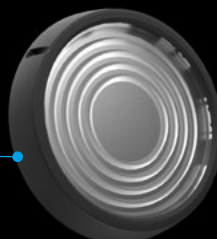
XLR 5-Pin DMX I/O

Low-noise controlled  
cooling system

LENS KIT: SG BLOKEVO1FCLK  
(*not included*)

1 X 63° magnetic fresnel lens

1 X 33° magnetic frost lens





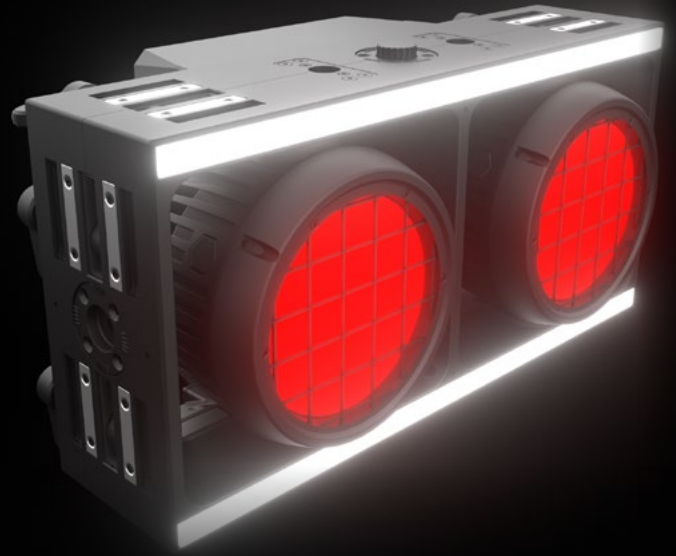
# BLOK EVO 2FX

High-power modular LED blinder with dual sources and advanced effects control

The BLOK EVO 2FX is the high-performance model of the BLOK EVO family, designed for professional applications where light output, creative control, and operational flexibility are essential.

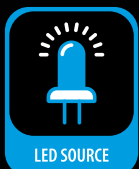
The dual 400W RGBAL COB source, combined with 16-section Tunable White strips, allows for highly advanced lighting management, ideal for live shows, television, corporate events, set design, and installations with a strong visual impact.

Thanks to the integrated connection system, multiple units can be combined to create matrix arrays, dynamic light surfaces, and advanced graphic effects.



## KEY POINTS

- 2 × 400 W RGBAL COB sources, independently controllable and tiltable, delivering extremely high output
- 2 × Tunable White strips with 8 independent sections
- Ultra-precise 16-bit dimming with halogen curve emulation
- Red Shift function for an authentic tungsten dim-to-warm effect
- 26 built-in dynamic patterns for advanced visual effects
- Integrated Fast Lock system for tool-free setup
- Integrated Mag Lock magnetic system for fast and precise alignment between units
- Multiple mounting points for creative rigging and floor installations, ideal for continuous matrix configurations
- Interchangeable magnetic lenses to adapt the beam angle
- Adjustable PWM frequency up to 25 kHz, ideal for video and broadcast applications
- Compact IP65 housing, perfect for indoor and outdoor use
- Flightcase for 4 projectors (Order code: SG CASEBLKEVO2FX)



LED SOURCE



RGBAL



TUNEABLE WHITE



SINGLE PIXEL CONTROL



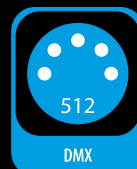
STROBE EFFECT



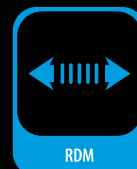
FLICKER FREE



IP65



DMX



RDM

# BLOK EVO SERIES

Die-cast aluminum housing  
IP rating: IP65

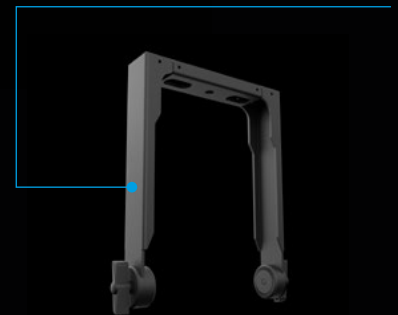
Mag Lock system  
of integrated magnets  
for quick and precise  
alignment between units

Top mounting points:  
2 pairs of 1/4-turn locks  
for the omega bracket

Pan directional adjustment  
for each cell: +/- 20°  
with manual control

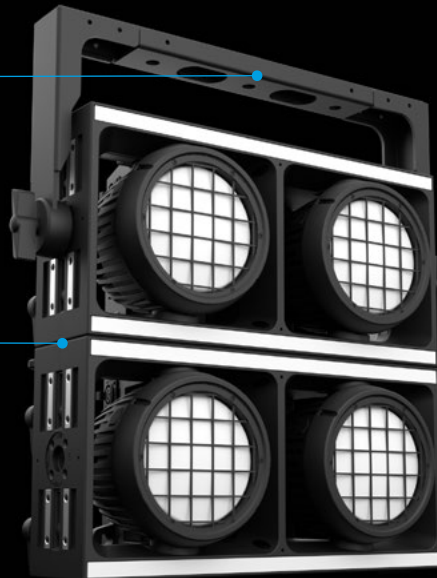


SG BLOKEVO2FXVB  
Vertical bracket  
*(not included)*



Mounting Points: 2 x 1/4  
turn locks on bracket

On-board mechanics  
for stacking multiple devices



LCD graphic display

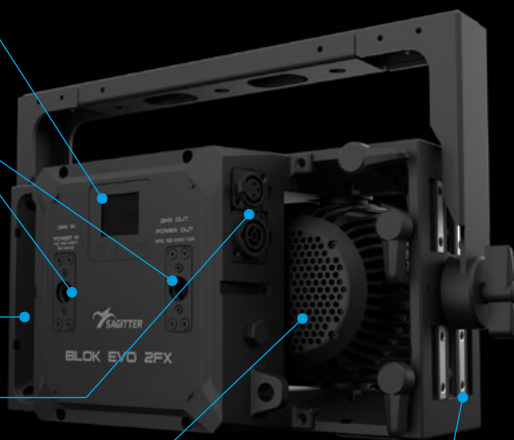
Back mounting points:  
2 pairs of 1/4-turn locks  
for the omega bracket

XLR 5-Pin DMX I/O

True1 compatible Power I/O

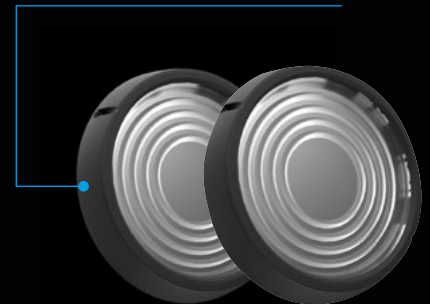
Low-noise controlled  
cooling system

Integrated Fast Lock system  
without the use of tools

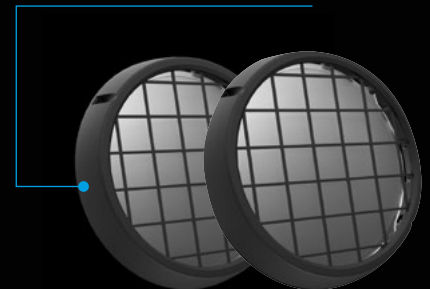


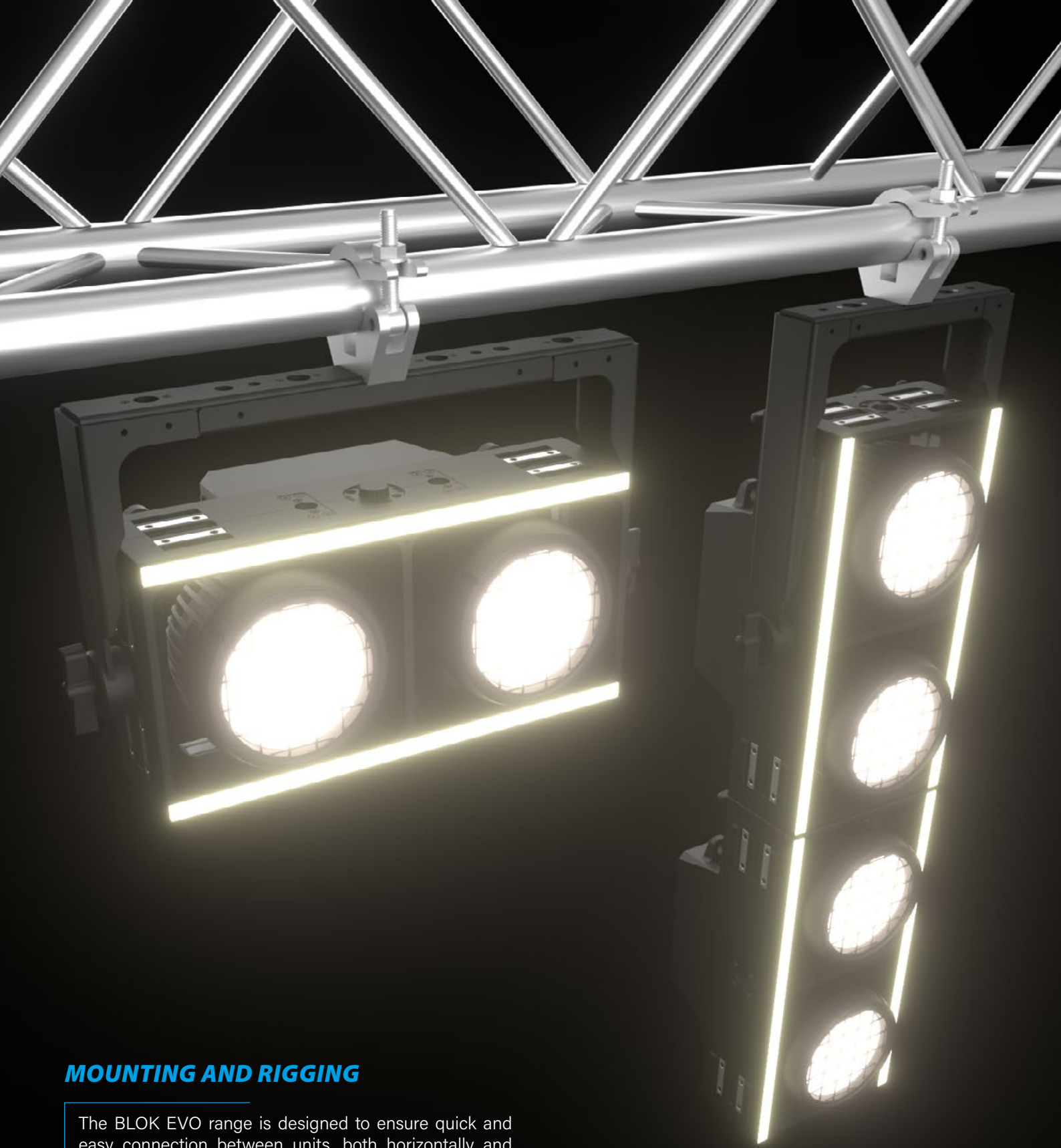
LENS KIT: SG BLOKEVO2FXLK  
*(not included)*

2 x 45° magnetic fresnel lens



2 x 37° magnetic frost lens





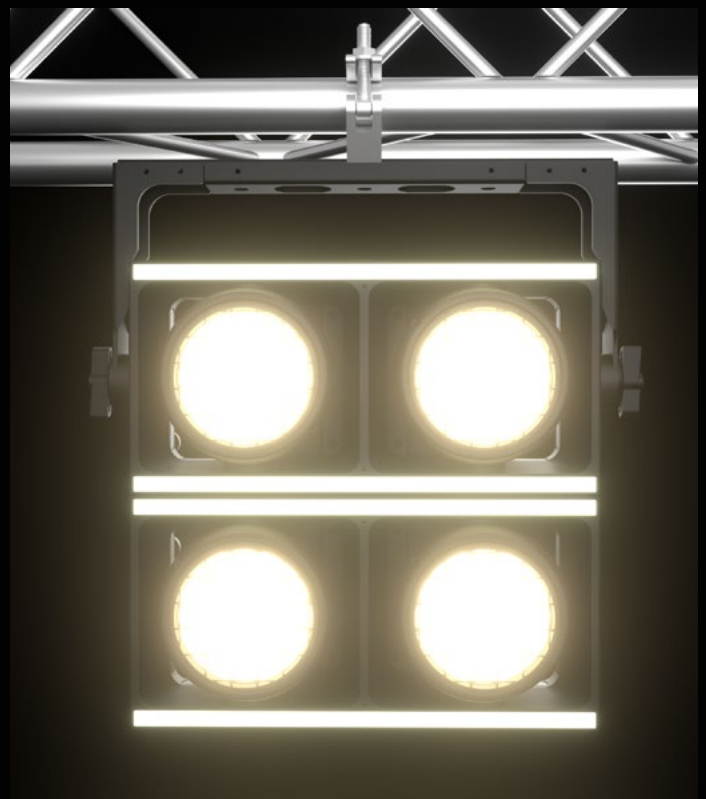
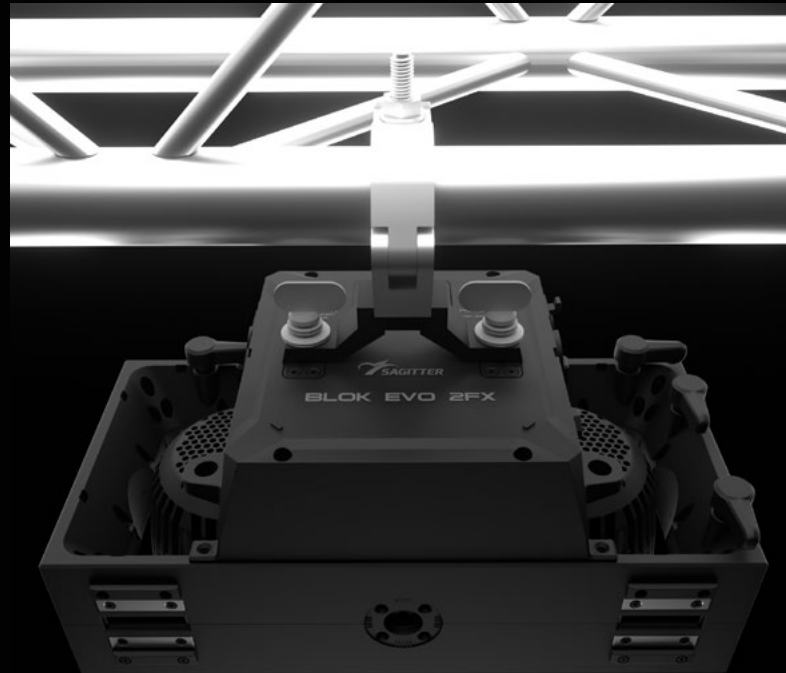
## **MOUNTING AND RIGGING**

The BLOK EVO range is designed to ensure quick and easy connection between units, both horizontally and vertically, thanks to the integrated Fast Lock system. The modular design allows multiple configurations to be created without the use of tools, with scalability ranging from a single column to large matrix arrays.



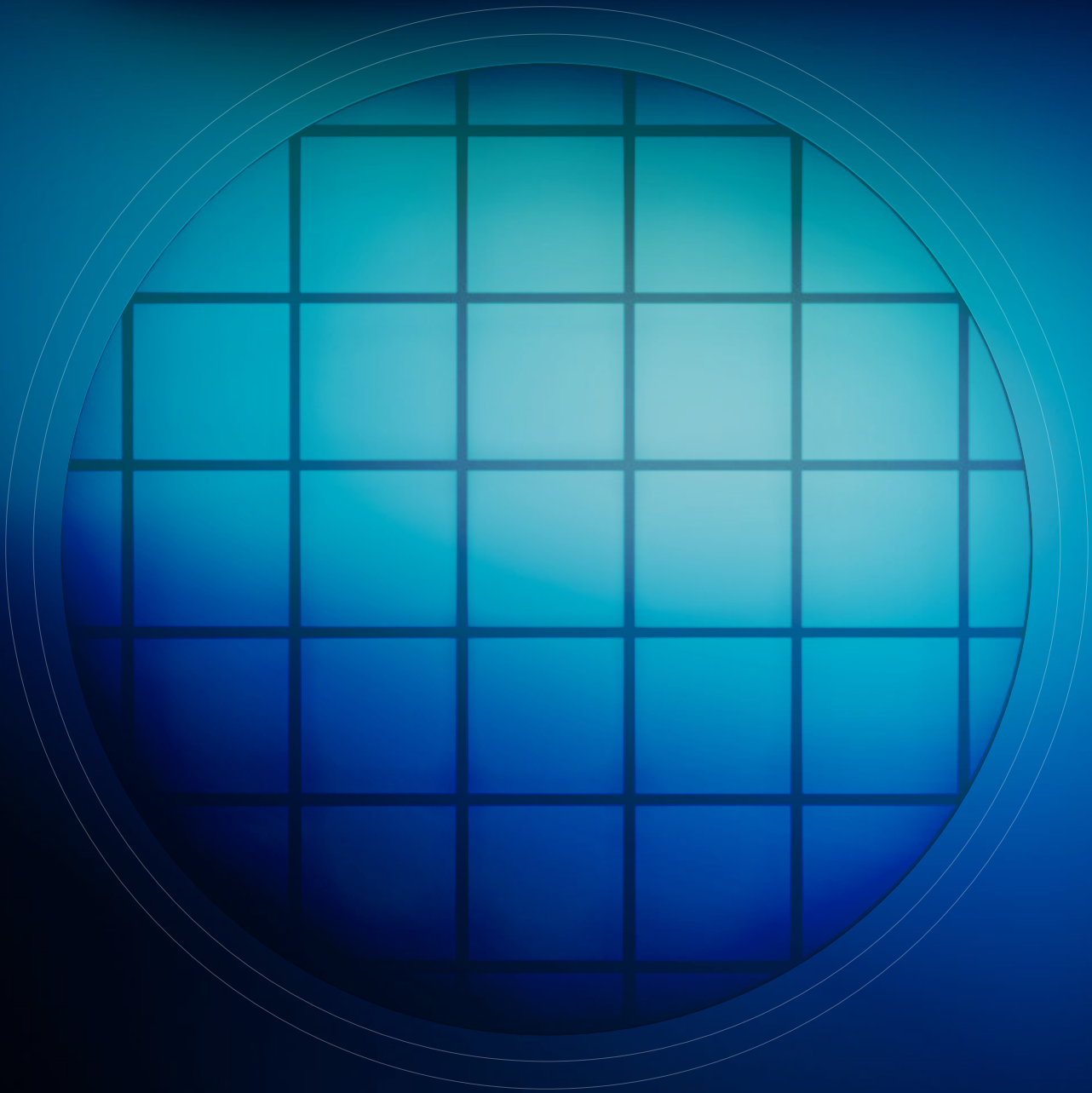
## MOUNTING OPTIONS

Installation possibilities are highly versatile. Dedicated mounting points on the top and rear allow the use of Omega brackets. The fixtures can be secured using M12 rigging points located on all sides, or directly interconnected through the Fast Lock system to create continuous and consistent structures. Integrated magnets on the top and sides assist with fixture alignment, enabling faster and more precise installation, even in hands-free conditions.





BLOK EVO 1FC	BLOK EVO 2FX
1 × 400W COB RGBAL	2 × 400W COB RGBAL
N/A	2 × Tunable White linear LED strips with 8 individual sections
Beam angle: 80°	Beam angle: 50°
33° Fresnel lens 63° frost lens	37° Fresnel lens 45° with frost lens
Luminous flux of FULL ON: - 460 lx @ 5m without lenses - 1182 lx @ 5m with 33° Fresnel lens - 318 lx @ 5m with 63° frost lens	Luminous flux of FULL ON: - 1126 lx @ 5m without lenses - 1630 lx @ 5m with 37° Fresnel lens - 930lux @ 5m with 45° frost lens
Fast Lock	Fast Lock
N/A	Mag Lock
190 x 190 x 223mm	400 x 200 x 200mm
4,5 kg	9,0 kg
CRI: Ra ≥84Ra	CRI: Ra ≥84Ra
Max power consumption 430W	Max power consumption 700W





is a brand of PROEL SPA  
(Worldwide Headquarters)  
Via alla Ruenia, 37/43  
64027 Sant'Omero (TE) - ITALY  
Tel. +39 0861 81241  
Fax +39 0861 887862  
P.I. 00778590679  
N.Reg.AEE IT 08020000002762

[sagitter.com](http://sagitter.com)